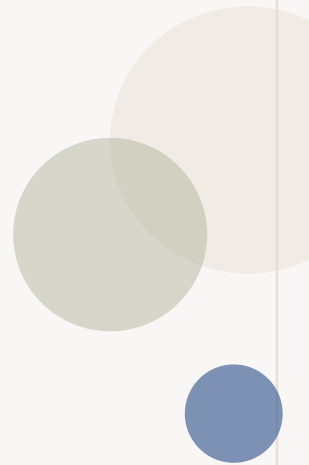


# Year 2

Class Names: Pacaya and Vesuvius

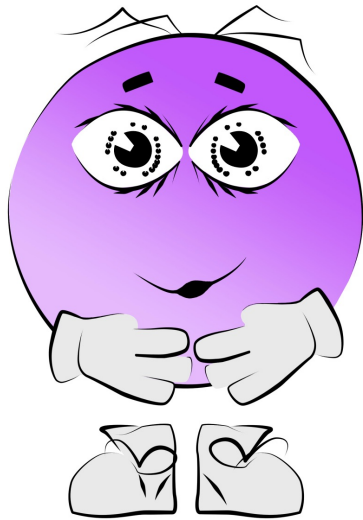
Year Group Team: Ritsa, Mujde, Loredana and Elvin





# Bowes Core Values

## Resilience



**I am the resilient Bebowe.**

I persevere and can bounce back even when there is a challenge.

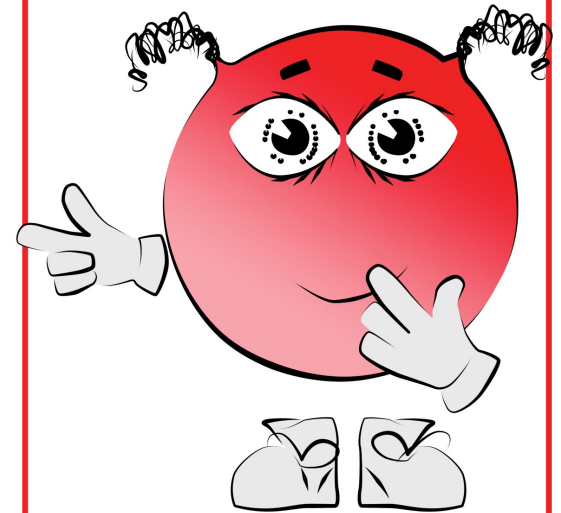
## Respect



**We are the respectful Bebowes.**

We show consideration to those around us and value ourselves and our community.

## Responsibility



**I am the responsible Bebowe.**

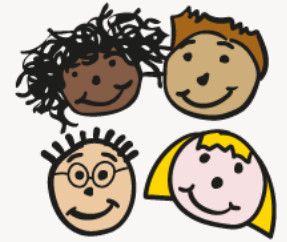
I make the right choices and take responsibility for my own actions.

# Attendance and Punctuality



- Registration is at 8:50am
- Please ensure your child is in school in good time
- The doors close at 8:50am
- School attendance is currently one of our priorities
- Please ensure all appointments are booked outside of school hours where possible
- Holidays during term time will strictly not be authorised
- Special requests should be directed to Effie, the Headteacher

# School Uniform



- Bowes/blue sweatshirt or cardigan
- Bowes/plain white polo shirt
- Black/grey skirt or trousers
- Black shoes or plain black trainers
- Blue and white checked dress (summer months)
- Black/grey shorts (summer months)

Please remember to label all your child's clothes and belongings.

# Active Uniform



Your child is required to wear their active uniform on:

Class	Indoor	Outdoor
Vesuvius	Thursdays	Wednesdays
Pacaya	Friday	Monday

Active Uniform:

- Bowes/plain white polo shirt
- Plain black/grey shorts for indoor lessons
- Plain black/grey tracksuit bottoms (no logos)
- Black trainers

Please ensure your child does not wear jewelry to school and long hair is tied up.

Please remember to label all your child's clothes and belongings.

# Home Learning

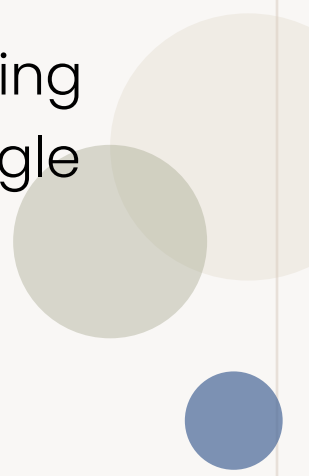
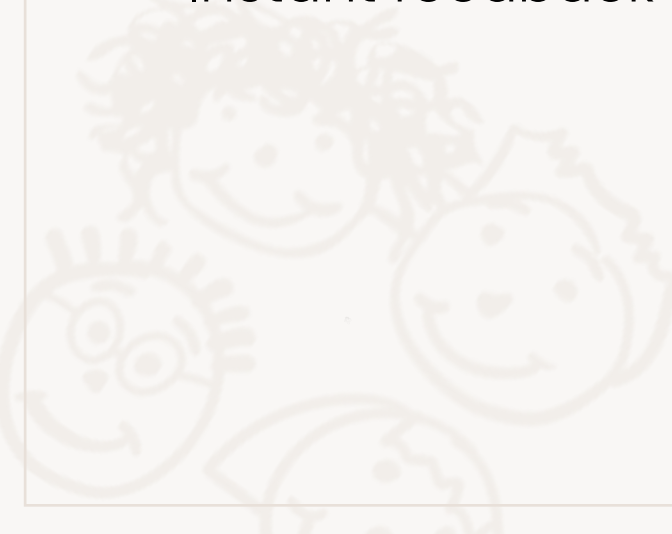


- Each child will have a Home Learning book.
- Home learning grids are sent to children each half term via Google Classroom@School and are placed in their Home Learning Book. The grids can also be found on the Bowes Website in the Classes section.
- A list of spellings will be sent out every week. These will be tested.
- KS1 – Children will receive one electronic Read Write Inc e-book allocated each week. Further information about how to access e-books will be provided as soon as possible. Once they have completed the RWI program, they will receive a variety of different books matched carefully with their phonic acquisition. Children will also have the opportunity to pick a book of their choice from their class library each week. They should read at least 10 minutes a day. Please read regularly with your child and record their progress in their reading record.
- [MyiMaths](#) homework is set weekly for Years 1 – 6.

# Chromebooks



- Can be used creatively
- Prepares pupils for the future
- Gives instant access to knowledge
- Encourages individual learning – personalises learning
- Team work - encourage collaboration through Google Suite
- Instant feedback for learning



# Additional Chromebook Feedback



To ensure we are keeping the children safe when using their Chromebooks, we use **Senso**, a cloud-based online monitoring and safeguarding software.

Senso effectively detects harmful and inappropriate behaviour on the children's Chromebooks, both in school and at home. If the software detects inappropriate searches or the unacceptable use of language, an email is sent to the Designated Safeguarding Lead and the Senior Leadership Team. This will then be investigated and if appropriate, we will speak to the user involved and contact parents to inform them of the breach if required.

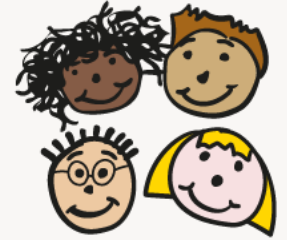
Chromebooks are for the children and should not be used by adults. The school also carries out regular internet browsing checks. 'Search history' cannot be deleted.

Chromebooks belong to the school and are loaned to the children. They must be treated with care – please refer to the signed agreement.

Do not eat or drink over the Chromebook.

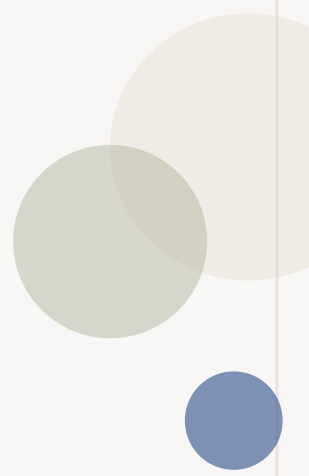
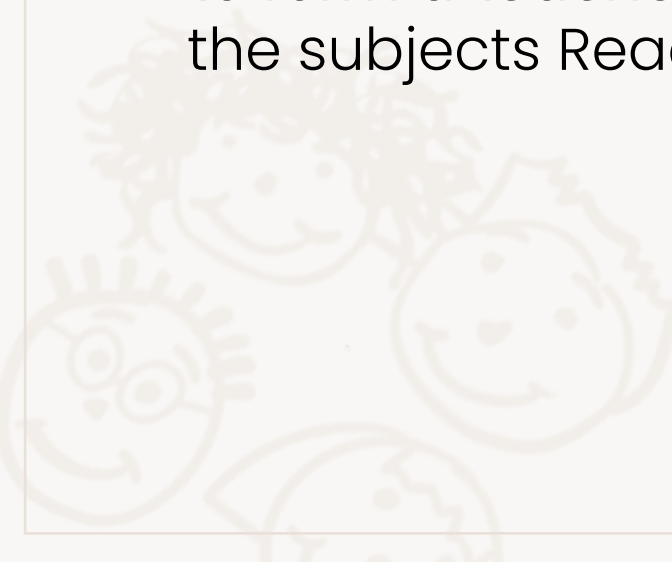
It is important that the children's use of their Chromebook is monitored both at home and school. Please ensure you monitor this at home.

# Year 2 – KS1 SATs



KS1 SATs tests are now optional

- If pupils sit the optional tests, these will take place in May.
- Teachers will use the outcome of these informal tests, together with the work the children have produced across the Key Stage, to form a teacher assessment judgement for the subjects Reading, Writing and Maths.



# Curriculum



At Bowes we aim to provide a creative and balanced curriculum that meets the needs of all our children.

Our Learning Quest this term is:

**Vesuvius – Ferocious Fire** (The Great Fire of London)

**Pacaya – London's Burning** (The Great Fire of London)

Please check the school website for updates on the curriculum.

# Ways to help at home...



Encourage your child to:

Practice their spellings (Sent out every Friday)

Read together (Visit the library)

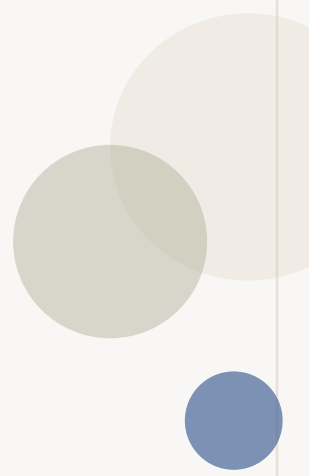
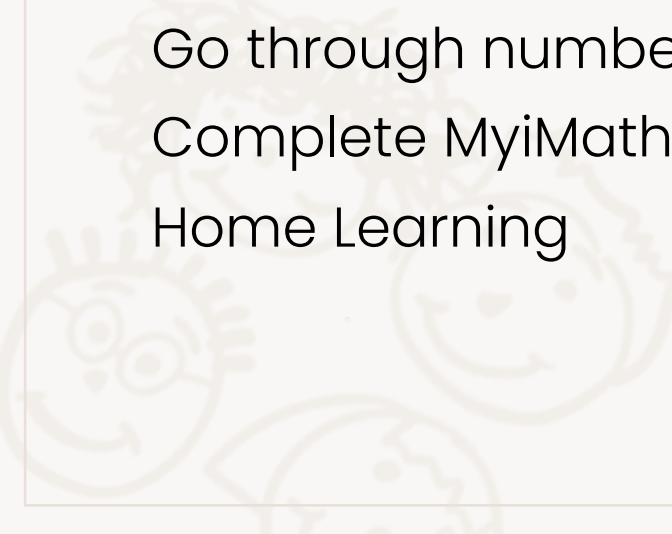
Encourage independence

Use online resources

Go through number bonds & timetables

Complete MyiMaths weekly

Home Learning



# Additional Information



Please keep us informed of any allergies/medication.

If your child is going to miss school due to an appointment or illness, please make sure you inform the office as soon as possible.

If your child's collection arrangements are different for any reason, please let the office know before the end of that day.

Check the [school website](#) and our Social Media platforms for updates and photographs from events.

**If you change your contact details, please inform the office**

# Our Socials!

**BOWES**  
PRIMARY SCHOOL

