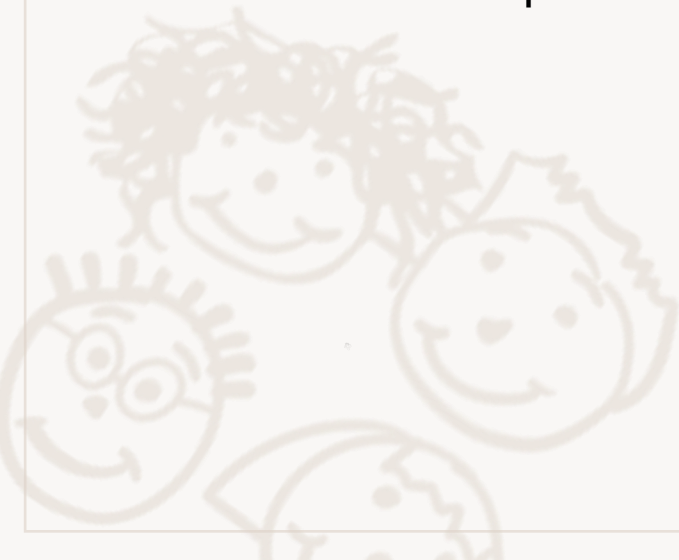


# Year 6

Class Names: Victoria and Angel

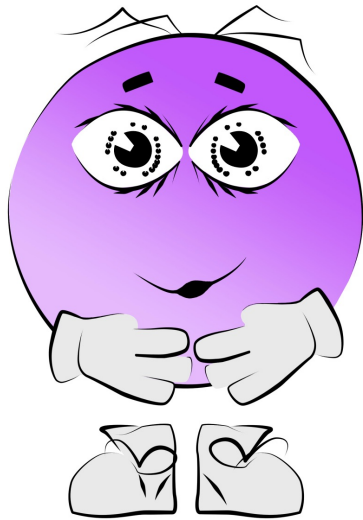
Year Group Team: Preen, Lorna, Natalie, Sharon & Karen





# Bowes Core Values

## Resilience



**I am the resilient Bebowe.**

I persevere and can bounce back even when there is a challenge.

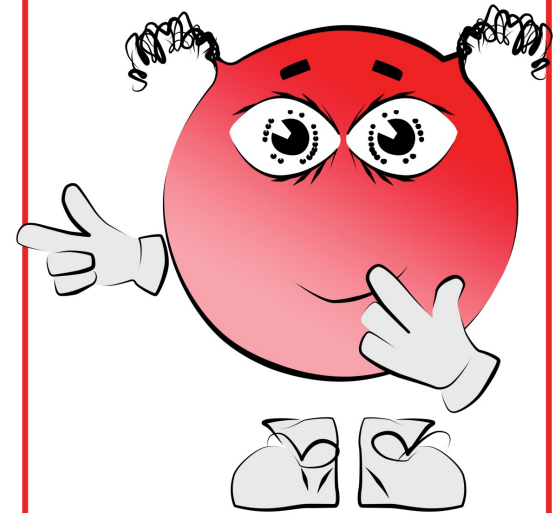
## Respect



**We are the respectful Bebowes.**

We show consideration to those around us and value ourselves and our community.

## Responsibility



**I am the responsible Bebowe.**

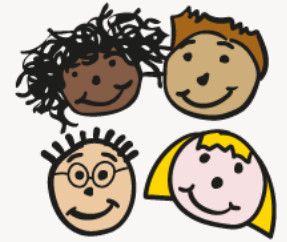
I make the right choices and take responsibility for my own actions.

# Attendance and Punctuality



- Registration is at 8:50am
- Please ensure your child is in school in good time
- The doors close at 8:50am
- School attendance is currently one of our priorities
- Please ensure all appointments are booked outside of school hours where possible
- Holidays during term time will strictly not be authorised
- Special requests should be directed to Effie, the Headteacher

# School Uniform



- Bowes/black sweatshirt or cardigan
- Bowes/plain white polo shirt
- Black/grey skirt or trousers
- Black shoes or plain black trainers
- Blue and white checked dress (summer months)
- Black/grey shorts (summer months)

Please remember to label all your child's clothes and belongings.

# Active Uniform



Your child is required to wear their active uniform on:

Class	Indoor	Outdoor
Angel	Tuesday	Monday
Victoria	Thursday	Tuesday

Active Uniform:

- Bowes/plain white polo shirt
- Plain black/grey shorts for indoor lessons
- Plain black/grey tracksuit bottoms (no logos)
- Black trainers

Please ensure your child does not wear jewellery to school and long hair is tied up.

Please remember to label all your child's clothes and belongings.

# Home Learning

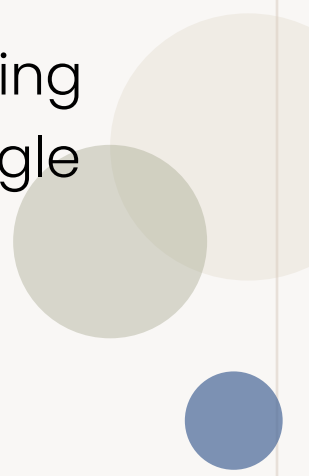
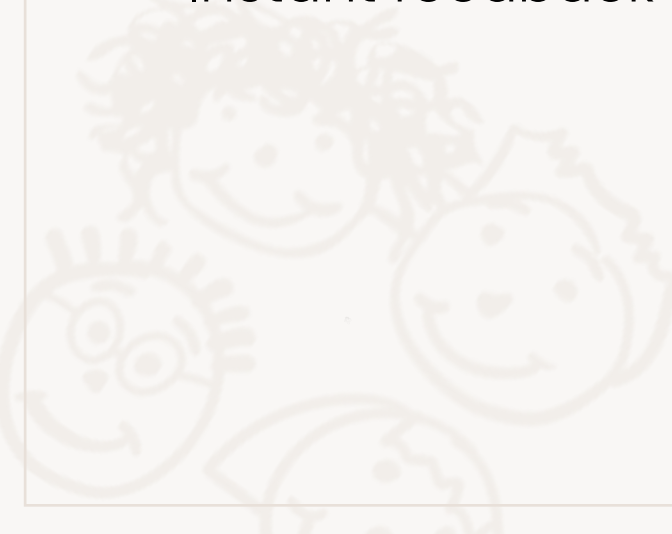


- A list of spellings will be sent out every week. These will be tested.
- KS2 – Reading comprehension is taught daily in school using various texts linked to their learning. In addition, all children will choose a book from their class library which they should read daily at home for at least 20 minutes. Please encourage your child to complete their reading record regularly.
- Please encourage your child to practise their Times Tables regularly using 'Times Tables Rock Stars' to support the work in class.
- [MyiMaths](#) homework is set weekly for Years 1 – 6.
- Weekly comprehension and SPAG homework in CGP books.

# Chromebooks



- Can be used creatively
- Prepares pupils for the future
- Gives instant access to knowledge
- Encourages individual learning – personalises learning
- Team work - encourage collaboration through Google Suite
- Instant feedback for learning



# Additional Chromebook Feedback



To ensure we are keeping the children safe when using their Chromebooks, we use **Senso**, a cloud-based online monitoring and safeguarding software.

Senso effectively detects harmful and inappropriate behaviour on the children's Chromebooks, both in school and at home. If the software detects inappropriate searches or the unacceptable use of language, an email is sent to the Designated Safeguarding Lead and the Senior Leadership Team. This will then be investigated and if appropriate, we will speak to the user involved and contact parents to inform them of the breach if required.

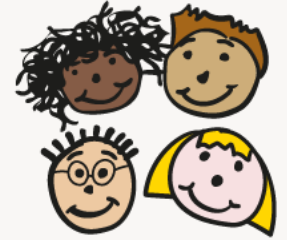
Chromebooks are for the children and should not be used by adults. The school also carries out regular internet browsing checks. 'Search history' cannot be deleted.

Chromebooks belong to the school and are loaned to the children. They must be treated with care – please refer to the signed agreement.

Do not eat or drink over the Chromebook.

It is important that the children's use of their Chromebook is monitored both at home and school. Please ensure you monitor this at home.

# Year 6 – KS2 SATs



Please see the table below for SATs information for parents regarding the KS2 SATs tests that will take place from Monday 11th May 2026 to Thursday 14th May 2026.

[Please click this link](#) for more information on our website. We will be holding an information session for parents in the Spring Term.

Date	Test
Monday 11th May 2026	English Grammar, Punctuation and Spelling (papers 1 and 2)
Tuesday 12th May 2026	English Reading
Wednesday 13th May 2026	Mathematics (papers 1 and 2)
Thursday 14th May 2026	Mathematics (paper 3)

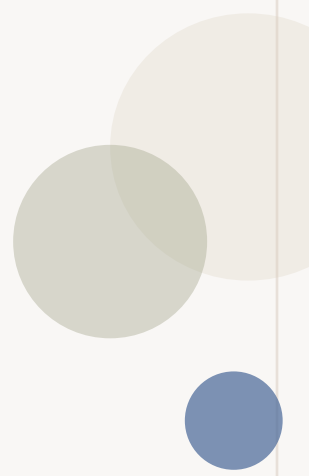
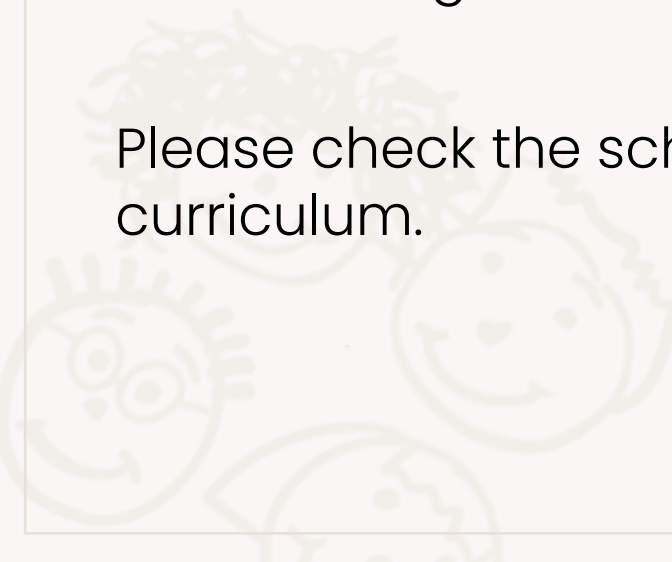


# Curriculum

At Bowes we aim to provide a creative and balanced curriculum that meets the needs of all our children.

Our Learning Quest this term is: World War II

Please check the school website for updates on the curriculum.

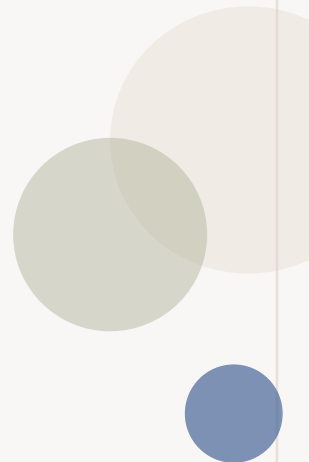


# Ways to help at home...



Encourage your child to:

- MyiMaths
- Spelling Shed
- Read daily at home for at least 20 minutes
- Fill in their reading record
- Complete free writing tasks
- CGP work



# Additional Information



Please keep us informed of any allergies/medication.

If your child is going to miss school due to an appointment or illness, please make sure you inform the office as soon as possible.

If your child's collection arrangements are different for any reason, please let the office know before the end of that day.

Check the [school website](#) and our Social Media platforms for updates and photographs from events.

**If you change your contact details, please inform the office**

# Our Socials

**BOWES**  
PRIMARY SCHOOL

